

ASI Alpaco™
Cubicles, Duct Panels,
Lockers, and Cabinets

ASI Washroom
Accessories





ASI GROUP EUROPE— WHERE INNOVATION, SPEED, AND RELIABILITY CREATE PEACE OF MIND

Welcome to the new ASI Group Europe—the world’s leading manufacturer of commercial cubicles, washroom accessories, and lockers.

So what makes ASI Group Europe so unique? Only ASI Group Europe designs, engineers, and manufactures fully-integrated solutions. So all of our products work together seamlessly. We offer the greatest experience in the industry with the largest product breadth delivered when and where you need them. Welcome to choice, welcome to innovations, welcome to the new ASI Group Europe.



1 VELARE™

An elegant space-saving solution, designed to tuck away clutter. This wall mounted stainless steel cabinet conceals an automatic soap dispenser, and your choice of a paper towel dispenser or high-speed hand dryer.



2 PIATTO™

ASI's distinctive new collection of washroom accessories is designed to be completely recessed, lying perfectly in the plane of the washroom wall without any protrusion.



3 CUBICLES

A wide range of cubicles designed to enhance any interior. See page 8-14.



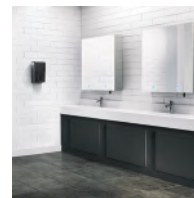
4 DUCT PANELS

An elegant way to cover the unsightly plumbing in a washroom cubicle without sacrificing the flexibility needed for maintenance access. See page 18.



5 LOCKERS + BENCHES

Available to be built in any configuration matrix with multiple base options, tiers, and styles to choose from. See page 15.



6 CABINETS

Manufactured using our Compact HPL for strength and durability with the highest quality construction. See page 19.



ASI WASHROOM ACCESSORIES

**THE MOST COMPREHENSIVE
COLLECTION OF WASHROOM
ACCESSORIES
AVAILABLE ANYWHERE.**

OUR COLLECTIONS



VELARE™



PIATTO™



ROVAL™

OUR PRODUCTS

Why mix and match disparate washroom accessory products from different manufacturers, when our company has designed, engineered, and manufactured everything you need from one source? Welcome to integrated solutions. Welcome to the new ASI.



Hand Dryers



Soap Dispensers



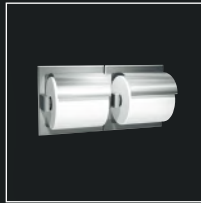
Mirrors



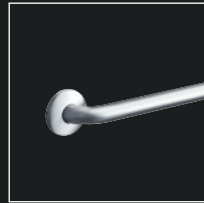
Feminine Hygiene Vendors and Disposals



Specialty Accessories



Toilet Paper Dispensers



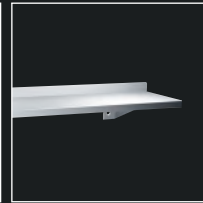
Grab Bars



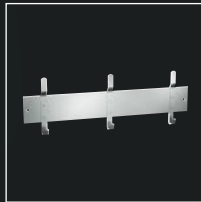
Shower/Tub Accessories



Baby Changing Stations



Shelves



Custodial Accessories



Healthcare Accessories



Hospitality Accessories



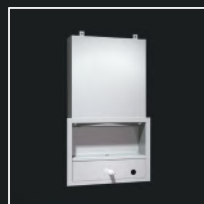
Security Accessories



Paper Towel Combination Units



Waste Receptacles



Cabinets



Combination Units



Paper Towel Dispensers



PROFILE™



SIMPLICITY™



TRADITIONAL™



White
(also available)



2020 TRI-Umph™ HIGH-SPEED HAND DRYER

Satin look cover: ABS plastic with silver ions. Ergonomic—no need to bend over or bend knees. Air blows down and back from vents above. No water splash-back. Ultra hygienic—over 99% of airborne bacteria is eliminated with the removable Triple HEPA Filter System. Optional voltages available.

MODEL OPTION:
20201 White finish



Overall Dimensions:
12¹¹/₁₆" x 23¹/₈" x 7³/₄"
(322 x 588 x 196 mm)

Decibel Level: 62.9-67.2 dB-A @ 2M

0042 SURFACE MOUNTED JUMBO ROLL TOILET TISSUE DISPENSER

Holds one roll up to 10" (254 mm) diameter of 1⁵/₈" or 2¹/₄" (41 or 57 mm) diameter core. Outer cabinet is stainless steel with a satin finish. Unit has viewing slot and tumbler lock.

Overall Dimensions:
10⁵/₈" x 10⁵/₈" x 4¹/₂"
(270 x 270 x 114 mm)

9030 SURFACE MOUNTED DUAL ROLL TOILET TISSUE DISPENSER

Stainless steel cabinet with mechanism for theft-resistant spindles holds 2 rolls up to 5¹/₄" (135 mm) diameter (1800 sheets); the top roll automatically drops in place when the bottom roll is used up.

Overall Dimensions:
6" x 12" x 6¹/₄"
(152 x 305 x 159 mm)



0347 VERTICAL SOAP DISPENSER
0345 HORIZONTAL SOAP DISPENSER

40 fl. oz. (1.2 L) capacity liquid soap dispenser in stainless steel; satin finish comes with an all-purpose valve and a tamper-resistant refill indicator.

0347 Unit Size:
4¹³/₁₆" x 8³/₁₆" x 3¹⁵/₁₆"
(122 x 208 x 100 mm)

0345 Unit Size:
8³/₁₆" x 4¹³/₁₆" x 3¹⁵/₁₆"
(208 x 122 x 100 mm)

Spout projection: 1⁵/₁₆" (24 mm)

0362-41 AUTOMATIC LIQUID SOAP AND GEL HAND SANITIZER DISPENSER – MATTE BLACK

Stainless steel soap and gel hand sanitizer dispenser in matte black finish with proximity sensor. Powered by 6 AA-size batteries (not included) and has tamper-resistant viewing window. Capacity: 27 oz. (0.8 L) when using the refillable soap or gel hand sanitizer cartridge.

Can be surface mounted or mounted to a mobile stand #FS-0300 (sold separately).

Overall Dimensions:
4¹³/₁₆" x 10⁵/₈" x 4¹/₈"
(122 x 270 x 105 mm)

9012 SURFACE MOUNTED PLASTIC BABY CHANGING STATION

Modern styling and easy-to-clean surface is fabricated of FDA-approved fungus- and bacteria-resistant plastic. Easy opening/closing pneumatic mechanism has oversized hinge and safety stop system. The built-in dispenser for towels or sanitary liners, hooks for diaper bag and purse, plus multi-lingual instructions add friendliness and convenience. Unit shall support a static load of 300 lbs. (136 kg). Surface mounted. Only 4" (102 mm) deep when closed.

Overall Dimensions:
Closed: 36" x 22" x 4"
(914 x 559 x 102 mm)
Open: 36" x 22" x 20¹/₁₆"
(914 x 559 x 519 mm)



20852 ROVAL™ SURFACE MOUNTED SANITARY WASTE RECEPTACLE

Lid is drawn one-piece construction and is secured to the cabinet with a heavy-duty 5/64" multi-staked concealed piano hinge. Cabinet top and body fabricated of 22 gauge stainless steel. 1 gal. (3.7 L) waste capacity.

Overall Dimensions:
7 1/4" x 10" x 3 1/2"
(185 x 253 x 89 mm)



0210 TRADITIONAL™ SURFACE MOUNTED PAPER TOWEL DISPENSER

Fabricated of 22 gauge stainless steel, this unit dispenses 400 C-fold or 525 multi-fold paper towels without adjustment or adapters and is fitted with tumbler lock and heavy-duty stainless steel piano hinge.

Overall Dimensions:
11" x 14 5/8" x 4 1/16"
(279 x 371 x 103 mm)



0620 CHANNEL FRAME MIRROR

1/2" x 1/2" (13 x 13 mm) 20 gauge type 304 satin finish stainless steel channel is a one-piece roll formed member that encases mirror and backing revealing a tight mitered corner. Mirror is installed on two wall brackets and held secure by theft-resistant screws.



8203 COMPACT FOLDING SEAT

5/16" (8 mm) thick, one-piece, solid, white colored, black core phenolic seat. Frame, support legs, flanges, and bracket are satin finish stainless steel. Features a self-locking mechanism. Meets ADA Accessibility Guidelines and the needs of the physically disabled and elderly when properly installed. Seat measures 18" (457 mm) wide and projects 16" (406 mm) from wall. Additional width options are available in 20", 28", and 33" (order with suffix -20, -28, and -33).

MODEL OPTIONS:

8204 Seat is sponge cushion covered with off-white Naugahyde® mounted on 1/2" (13 mm) thick marine grade plywood.
8207 Seat is fabricated of stainless steel, satin finish, slatted design.



7312 DOUBLE ROBE HOOK

Two hooks, set apart at 90° on center, extend 2 3/8" (60 mm) from wall or door. Suitable for robes, clothing, or small bags. Satin finish stainless steel.



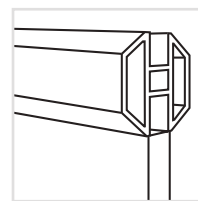
7314 SINGLE TOILET PAPER ROLL HOLDER

The toilet paper placed on this bail-type holder has unrestricted feed. Its design allows for easy replacement by maintenance or even guests. All exposed surfaces have a satin finish stainless steel. Paper bar is reversible to change handing.

Overall Dimensions:
5 3/16" x 3 3/8" x 2 3/16"
(131 x 86 x 56 mm)



A marriage of simplicity and functionality creates a collection that has ASI's exclusive Ultimate Privacy™ at its heart. Zero sightlines, doors, and pilasters that meet in a flush finish rebated closure all ensure guaranteed privacy. Style and stability have not been sacrificed in this collection, with robust octagonal head rails adding to our seamless construction. The Classic collection matches any aesthetic and performance need. Crisp design lines, bold hardware options, and superior functionality make the Classic collection perfect for any high-profile setting.



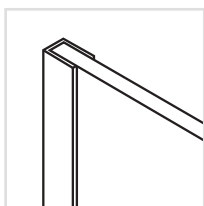
CLASSIC HEAD RAIL

An octagonal head rail features crisp architectural lines while stabilizing the front pilaster panels.



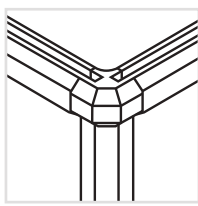
CLASSIC CUBICLES

**DRAMATIC LINES
AND BOLD HARDWARE
DEFINE OUR
CLASSIC COLLECTION.**



**CLASSIC PANEL
WALL ATTACHMENT**

The panel wall bracket anchors the panels to the walls for stability.



**CLASSIC CORNER
BRACKET SYSTEM**

All corners are concealed in our beveled corner guard for stability and durability.



COLORS + FINISHES

A wide range of simulated woods, metals, and solid colors available. See page 21.

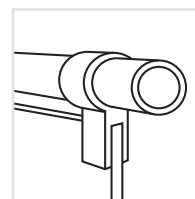
Classic Cubicles in G005 Grand Bleu with nylon hardware and pedestals.



ELEGANCE CUBICLES

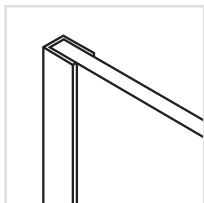
**WITH SOPHISTICATED DETAILS
ELEGANCE IS OUR MOST
GRACEFUL AND REFINED
CUBICLE SYSTEM.**

This visually appealing collection is ideal for the most aesthetically demanding applications. The signature top rail provides structural stability and style. If you're looking for strength, comfort, aesthetics, and durability, the Elegance collection has it all.



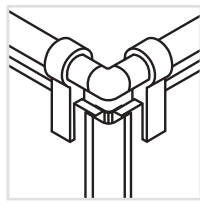
ELEGANCE TUBULAR HEAD RAIL & ROBUST BRACKET

Pilasters and side panels are supported by the top rail using aluminum or stainless steel brackets.



ELEGANCE PANEL WALL ATTACHMENT

The panel wall bracket anchors the panels to the walls for stability.



ROUNDED CORNERS

Corners and door panels are perfectly rounded for a refined and elegant appearance.



COLORS + FINISHES

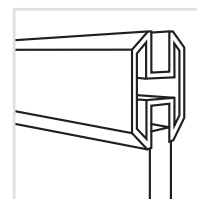
A wide range of simulated woods, metals, and solid colors available. See page 21.

Elegance Cubicles in P092 Pomme Verte with aluminum hardware and stainless steel pedestals.

AVANT GARDE CUBICLES

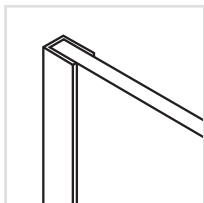
OUR MODERN AND SOPHISTICATED AVANT GARDE CUBICLE SYSTEM LITERALLY FLOATS ABOVE THE FLOOR.

This sleek cubicle system seems to defy gravity, with a stylish yet robust head rail system that allows the pilasters and panels to be suspended without requiring pedestal support from beneath. The result is a floating style that appears to hover above the floor. Sophistication meets function in this unique head rail system that is solidly braced and ultra-refined.



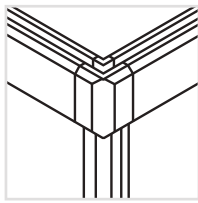
FULLY SUSPENDED SYSTEM

Wall to wall "H" head rail captures pilaster allowing for a floating look.



AVANT GARDE PANEL WALL ATTACHMENT

The panel wall bracket anchors the panels to the walls for stability.



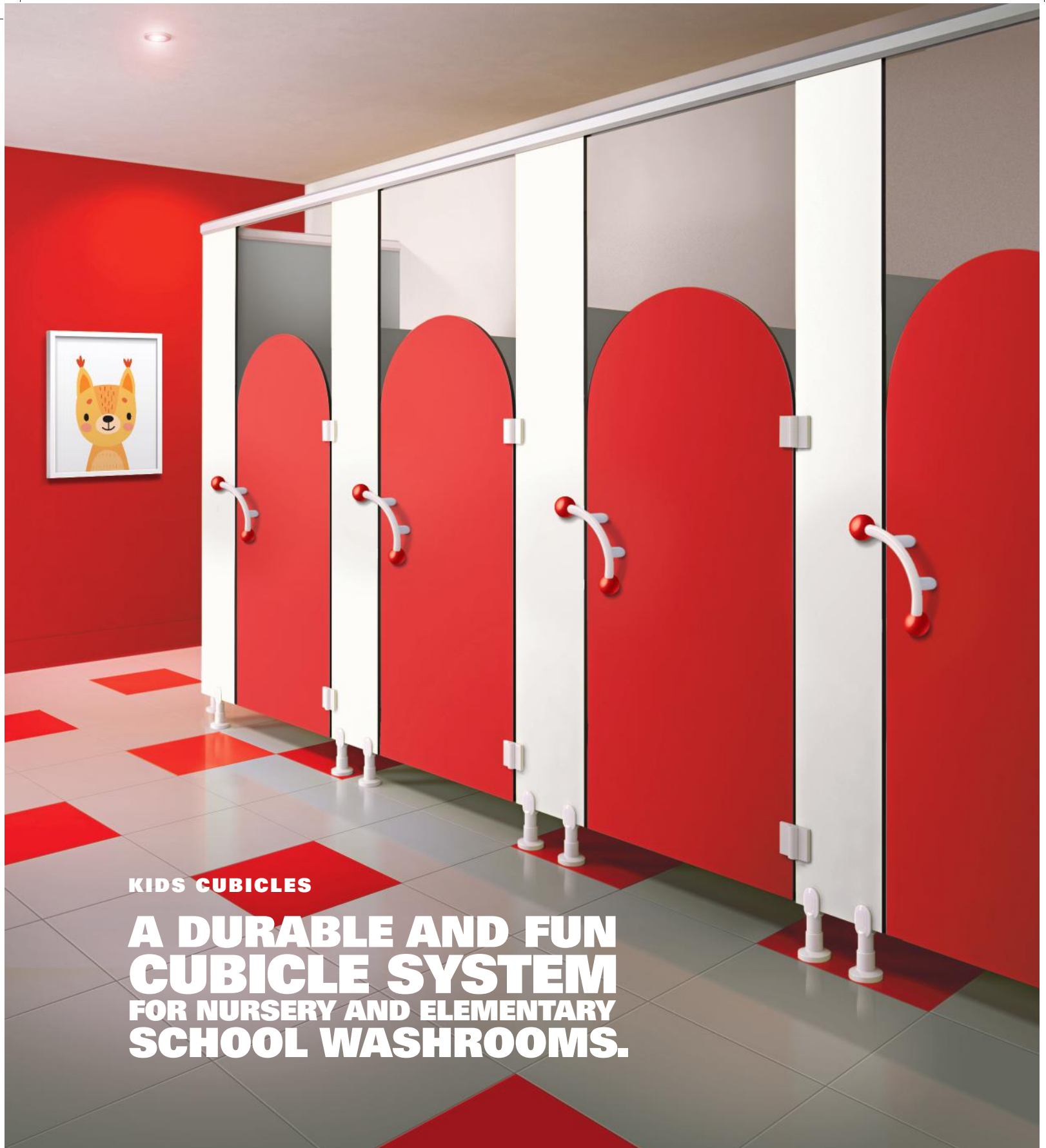
AVANT GARDE BEVELED CORNER

Pilasters and side panels are supported by our bold and sleek Avant Garde corner assembly system.



COLORS + FINISHES

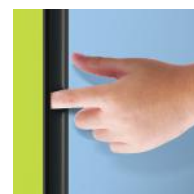
A wide range of simulated woods, metals, and solid colors available. See page 21.



KIDS CUBICLES

A DURABLE AND FUN CUBICLE SYSTEM FOR NURSERY AND ELEMENTARY SCHOOL WASHROOMS.

Our child-friendly cubicles are engineered to offer the best and safest features. Doors have only fixed knobs, so caretakers have access to the cubicles. And our child-friendly cubicles can be designed to look like just about anything.



Rubber profiles inserted between the doors and pilasters prevent injury to hands and fingers.

Kids Cubicles in R062 Rouge Fatal and B070 Blanc Megève with white nylon hardware and pedestals.



LOCKERS + BENCHES

**MORE THAN JUST CUBICLES
WE OFFER LOCKERS,
AND BENCHES,
IN EVERY SHADE
OF PERFECTION.**

An almost endless collection of construction options and ease of installation define our locker systems, while exciting colors and elegant finishes add allure. Lockers can be built in any configuration matrix with multiple base options, tiers, and styles to choose from. Door features include concealed, self-closing hinges, and cushioned bumpers to ensure smooth and long-lived operation. Our benches are a great complement to any locker room when both aesthetics and functionality are needed.



**LOCK
OPTIONS**

A variety of lock options available to meet your security requirements.



HARDWARE

WHERE FORM STYLISHLY MEETS FUNCTION— ASI ALPACO™ HARDWARE

ASI Alpaco™ offers a variety of hardware options that provide a modern, elegant appearance with increased durability. Choose from our lightweight Anodized Aluminum, heavy-duty Stainless Steel, or stylish Nylon.

Our hardware works with all of our cubicle systems providing resistance to deformation.



◀ Anodized Aluminum



◀ Type 304 Stainless Steel

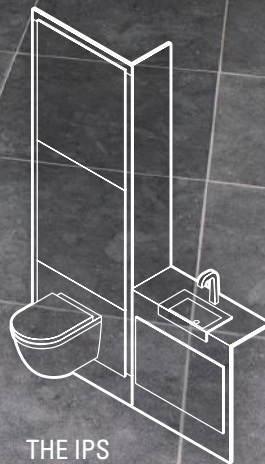


◀ Nylon

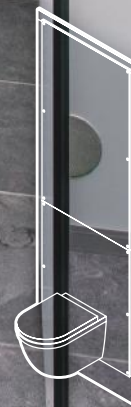


DUCT PANELS

**ASI ALPACO™ DUCT PANELS—
DEMOUNTABLE PANELS
TO ACCESS PLUMBING**



THE IPS
SYSTEM



THE SANITARY
BACK PANEL
SYSTEM

ASI Alpaco™ duct panels offer an elegant way to cover the unsightly plumbing in a washroom cubicle without sacrificing the flexibility needed for maintenance access. The stylish high pressure laminate (HPL) we use in our systems is antimicrobial and virtually impermeable; we can also match any of our cubicle colors to create the finished look that your washroom deserves.

We produce two different options—panel systems that are demountable (removable) or ones that are not demountable (fixed to the wall) where, if desired, we could provide an access portal to reach the plumbing. In both cases we can provide coverage from floor to ceiling or create a partial height system for you.



CABINETS

**ASI ALPACO™ CABINETS—
CONCEAL EXPOSED PIPING
AND ADD STORAGE SPACE**

ASI Alpaco™ cabinets are designed to complement our cubicle systems while providing access to plumbing and adding a stylish storage space for any washroom interior. Manufactured using our Compact HPL for

strength and durability with the highest quality construction that's resistant to impact and scratches. Cabinets are offered in all of our cubicle colors to create an integrated look.



COMPACT HPL PROVIDES SUPERIOR STRENGTH, DURABILITY, AND A BROAD VARIETY OF PATTERNS AND COLORS

Compact HPL sheets are fused at high temperature and pressure providing strength and durability. This Compact HPL is Class A fire rated, impermeable to humidity, highly durable, and resistant to impact, scratch, and graffiti—backed by a 25-year warranty against delamination, breakage, or corrosion.

ASI Alpaco™ cubicles, lockers, cabinets, and our Piatto™ collection are manufactured using Compact HPL materials.



THE DURABILITY AND ELEGANCE OF TYPE 304 STAINLESS STEEL COMPLEMENTS ANY WASHROOM

Type 304 stainless steel is sleek and provides increased resistance to corrosion.

A wide range of our washroom accessories and cubicle hardware utilizes the strength and beauty of stainless steel.

COLORS & FINISHES

CUBICLE COLORS & FINISHES



PROFILES & HARDWARE



*These colors are printed to provide as accurate a representation of the color collection as possible. However, they may vary slightly from the original Polyrey panel colors. **Color samples and product samples may be available on request.***

WHO WE ARE

Only ASI Group designs, engineers, and manufactures fully integrated washroom accessories, cubicles, cabinets, and lockers from one source.

The ASI Group is known for innovative products, speed to market, and the widest offering of materials and products

in the industry. Our family of companies work together with one mission in mind—“To make our customers successful by providing value that exceeds price and an excellent service experience.”



TOILET PARTITIONS

ASI offers the most comprehensive collection of plastic, plastic laminate, powder coated, Compact HPL, and stainless steel partitions from one source.



WASHROOM ACCESSORIES

The world's leading manufacturer of commercial washroom accessories. We offer the most comprehensive selection of washroom accessories available anywhere.



**WE ARE LASER FOCUSED ON DELIVERING EXACTLY WHAT YOU NEED—
WHERE AND WHEN YOU NEED IT.**

With operating units and offices in the USA, Canada, Australia, Belgium, UK, Middle East, and Mexico, along with sales in more than 50 countries, our ability to serve is not limited by geography.

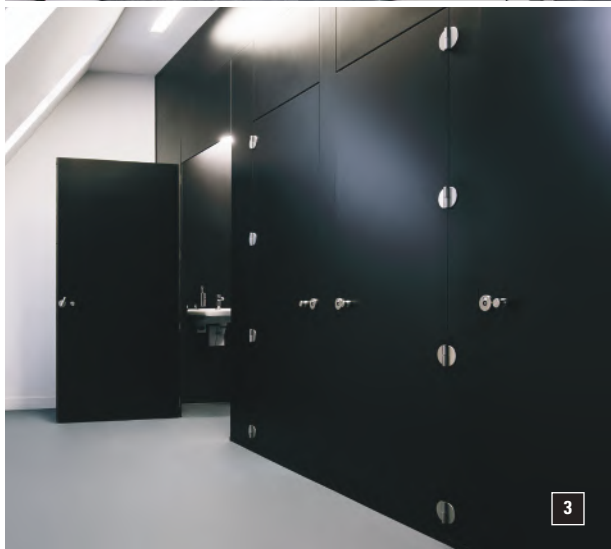
Our broad scope helps meet the needs of healthcare, education, office, and retail buildings, as well as airports, stadiums, government offices, cultural centers, and hotel/restaurant operations.

SALES IN OVER 50 COUNTRIES

385+ GLOBAL REPRESENTATIVES

1,000+ HIGHLY SKILLED EMPLOYEES

>1.3 MILLION SQ. FT. MANUFACTURING & OFFICE FACILITIES



1 2 *Residence Palace, Brussels, Wetstraat*
HPL Cubicles and Stainless Steel Accessories

3 4 *Port House, Port of Antwerp, Belgium*
HPL Cubicles



STORAGE SOLUTIONS

A wide range of colors and materials including steel, solid plastic, and Compact HPL.



VISUAL DISPLAY PRODUCTS

Through constant research, innovation, and development, we design and manufacture high quality visual display products that are easy to install and require little maintenance.



www.hygiene-shop.eu - info@hygiene-shop.eu



www.asigroup-europe.com