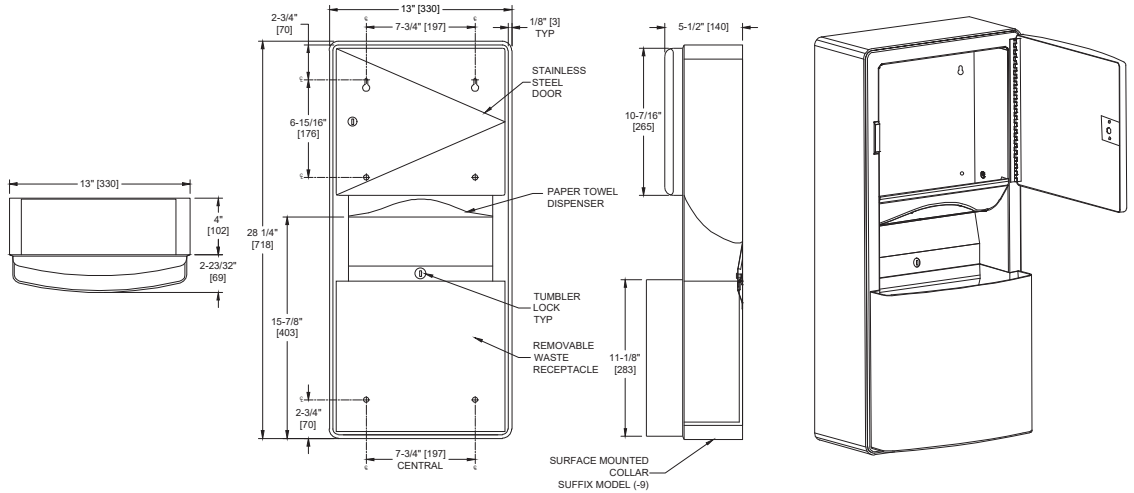


Royal™ Surface Mounted Paper Towel Dispenser & Removable Waste Receptacle

Paper Towel Combination Units

Royal

MasterFormat Section 10 28 13



Scan for Information



SUSTAINABILITY/LEED

MR 4.1 (1) EQ 4.1 (1)
 MR 4.2 (1) EQ 4.2 (1)
 MR 6 (1) EQ 4.4 (1)

NOTE:
 ALL DIM'S INCH [MM]
 ILLUSTRATION FOR REF ONLY AND NTS
 FOR CLEANING INSTRUCTIONS SEE APPROPRIATE SECTIONS IN
 PRODUCT CARE & MAINTENANCE BULLETIN (PCM) ON ASI WEBSITE

PRODUCT OVERVIEW

Dispenses 350 C-fold, 475 multi-fold paper towels. 3.0 gal. (11.2 L) removable stainless steel waste receptacle with a tumbler lock. 22 gauge type 304 stainless steel door in a satin finish with a flush lock and a heavy-duty 3/16" [4,7] staked piano hinge on door. Surface mounted with stainless steel collar. Towels are self-feeding upon user manual demand until supply is depleted. Unit may be reloaded with a partial load in place and will continue to feed properly. Towels are replenished and waste receptacle is emptied manually. Locked door and waste receptacle prevents unauthorized access or removal.

KEY FEATURES & SPECIFICATIONS

- Curved front adds strength and elegance
- Concealed, Multi-Staked Piano Hinge - Removable Waste Can
- Type 304 Stainless Steel - Satin Finish
- Surface Mounted - w/ 9" Collar
- Pull Type
- 350 C-Fold or 475 Multi-Fold / 3.0 Gal. (11.2 L) Waste Capacity



OPERATION & MAINTENANCE

Towels are self-feeding upon user manual demand until supply is depleted. Unit may be reloaded with a partial load in place and will continue to feed properly. Towels are replenished and waste receptacle is emptied manually on a cycle determined by maintenance needs. Locked door and waste receptacle prevents unauthorized access or removal.

TECHNICAL INFORMATION / PRODUCT PROPERTIES

Property	Value
Dimensions	13" [330] W x 28-1/4" [718] Hx 5-1/2" [140] D
Construction	Type 304 Stainless Steel - Satin Finish Concealed, Multi-Stacked Piano Hinge Pull Type
Mounting	Surface Mounted - w/ 9" Collar
Capacity	350 C-Fold or 475 Multi-Fold / 3.0 Gal. (11.2 L) Waste Capacity

INSTALLATION

Surface mount unit to wall using #10 self-threading screws (by others) through concealed mounting holes provided. For compliance with 2010 ADA Accessibility Standards mount unit with centerline of towel outlet 48" [1219] maximum Above Finish Floor (AFF). SM collar is installed on cabinet prior to mounting on wall following procedure described on SM Collar TDS. Install unit for general utility with bottom edge 40" [1016] AFF.

WARRANTY

One (1) Year from date of Invoice