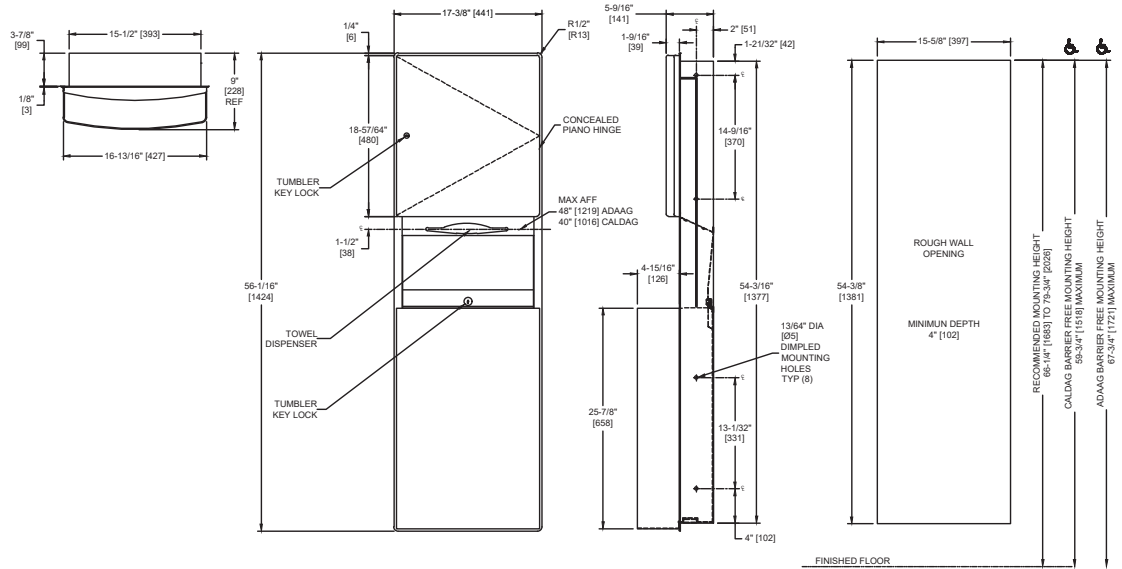


Royal™ Recessed Paper Towel Dispenser & Removable Waste Receptacle

Paper Towel Combination Units

Royal

MasterFormat Section 10 28 13



Scan for Information



SUSTAINABILITY/LEED

MR 4.1 (1) EQ 4.1 (1)
 MR 4.2 (1) EQ 4.2 (1)
 MR 6 (1) EQ 4.4 (1)

NOTE:
 ALL DIM'S INCH [MM]
 ILLUSTRATION FOR REF ONLY AND NTS
 FOR CLEANING INSTRUCTIONS SEE APPROPRIATE SECTIONS IN
 PRODUCT CARE & MAINTENANCE BULLETIN (PCM) ON ASI WEBSITE

PRODUCT OVERVIEW

Dispenses 600 C-fold or 800 multi-fold paper towels. 14.8 gal. (56 L) removable waste receptacle. Door made of 18 gauge type 304 stainless steel with a heavy-duty 3/16" [4,7] staked piano hinge. Towels are self-feeding upon user manual demand until supply is depleted. Unit may be reloaded with a partial load in-place and will continue to feed properly. Towels are replenished and waste receptacle is emptied manually. Locked door and waste receptacle prevents unauthorized access or removal.

KEY FEATURES & SPECIFICATIONS

- Curved front adds strength and elegance
- Concealed, Multi-Staked Piano Hinge - Removable Waste Can
- Type 304 Stainless Steel - Satin Finish
- Recessed
- Pull Type
- 600 C-Fold or 800 Multi-Fold / 14.8 Gal. (56.0 L) Waste Capacity



OPERATION & MAINTENANCE

Towels are self-feeding upon user manual demand until supply is depleted. Unit may be reloaded with a partial load in-place and will continue to feed properly. Towels are replenished and waste receptacle is emptied manually on a cycle determined by maintenance needs. Locked door and waste receptacle prevents unauthorized access or removal.

TECHNICAL INFORMATION / PRODUCT PROPERTIES

Property	Value
Dimensions	17-3/8" [441] W x 56-1/16" [1424] H x 9" [228] D
Construction	Type 304 Stainless Steel - Satin Finish Pull Type
Mounting	Recessed
Capacity	600 C-Fold or 800 Multi-Fold / 14.8 Gal. (56.0 L) Waste Capacity

INSTALLATION

Recess mount unit in wall using #10 self-threading flat head screws (by others) through concealed mounting holes provided. For compliance with 2010 ADA Accessibility Standards mount unit with center of towel outlet 48" [1219] maximum Above Finish Floor (AFF). Note that top of Rough Wall Opening (RWO) is 27/32" [21] below top of unit.

Rough Wall Opening (RWO) required is 15-5/8" [397] W x 54-3/8" [1381] H x 4" [102] D

WARRANTY

One (1) Year from date of Invoice