

## **ELENCO COMPONENTI VAPORNET - 2011 VAPORNET COMPONENTS LIST - 2011.**

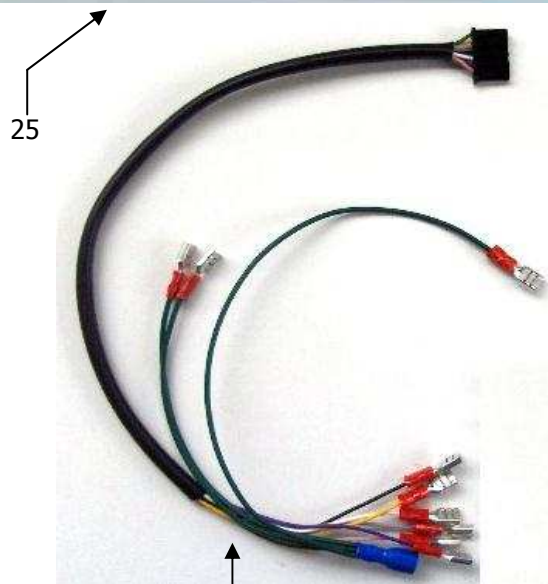
01. FRONTALINO / FRONT PANEL				
<i>Pos.</i>	<i>CODE</i>	<i>DESCRIPTION ITA</i>	<i>DESCRIPTION ENG</i>	
01.1	A000G006C273	MANOMETRO M63S ATT. 1/8" M 0-10 BAR ARGENTO	PRESSURE GAUGE M63S 1/8" M 0-10 BAR	
01.2	A003G006C627	STAFFA BLOCCAGGIO MANOMETRO M63	CLAMP	
01.3	A001G006C653	RACCORDO A T 1/8" FFM	FITTING PIPE "T" 1/8 FFM	
01.4	A000G006C439	CAPILLARE PER MANOMETRO RIVESTITO	COVERED FLEX FOR PRESSURE GAUGE	
01.5	A000G006C272	PRESSOSTATO MA-TER XP110 1/8 Tar. 6,5 bar	AIR PRESSURE SWITCH MA-TER XP110 1/8 Tar. 6.5 bar	
01.6	A000G006C306	RACCORDO DIRITTO MAS. 1/8" - TUBO 6/4	PIPE FITTING, STRAIGHT MALE 1/8" TUBE 6/4	
01.7	A036G006C2390	VNR VALVOLA UNIDIREZIONALE 1/8" F	NON-RETURN VALVE 1/8" FF	
01.8	A042G006C5546	RACCORDO A T 1/8" MMF	FITTING PIPE "T" 1/8 MMF	
01.9	A004G006C432	RUBINETTO ATT. 1/8" FF CON FORO M3 E FRESATURA	TAP 1/8" FF	
01.10	A004G006C865	SUPPORTO PER RUBINETTO	HOLDER - TAP	
01.11	A004G006C719	RONDELLA D.13 x 23,5 x 2,5	WASHER D 13 X 23.5 X 2.5	
01.12	A000G006C232	GHIERA ESAG. 15 PER FISSAGGIO RUBINETTO	METAL RING FOR TAP FIXING	
01.13	A000G006C230	GRANO 3 x 8	GRUB SCREW 3X8	
01.14	A036G006C1221	VOLANTINO A 4 LOBI	TWIST GRIP, 4 POLES	
01.15	A004G006C860	INTERRUTTORE ROSSO ON/OFF 20A	SWITCH (RED COLOUR) 20A ON/OFF	
01.16	A000G006C377	CAPPUCCIO DI PROTEZIONE INTERR. ON/OFF	ON-OFF SWITCH PROTECTION CAP	
01.17	A000G006C352	INTERRUTTORE ROSSO ABILITAZIONE INIEZIONE	SWITCH (RED COLOUR) FOR DETERGENT	
01.18	A004G006C1912	CAPPUCCIO DI PROTEZIONE 19x25	PROTECTION CAP 19X25	
01.19	A000G006C292	PULSANTE MOMENTANEO NERO BIPOLARE	SWITCH, TEMPORARY, BLACK, BIPOLAR	
01.20	A042G006C2406	SEGNALATORE LUMINOSO GIALLO CON LED 5V	LIGHT, YELLOW WITH LED 5V	
01.21	A042G006C2402	SEGNALATORE LUMINOSO ROSSO CON LED 5V	LIGHT, RED WITH LED 5V	
01.22	A042G006C2404	SEGNALATORE LUMINOSO VERDE CON LED 5V	LIGHT, GREEN WITH LED 5V	
01.23	A042G006C2408	SEGNALATORE LUMINOSO ARANCIONE CON LED 5V	LIGHT, ORANGE WITH LED 5V	
01.24	A030G006C1551	CAVETTI PER LED CABLATI	CABLES FOR LED	
01.25	A004G006C2209	PANNELLO SERIGRAFATO "TURBOLAVA"	PANEL, TURBOLAVA SILKSCREENED	



Schrama Handels GmbH | Schwendberg 465 | A-6283 Hippach |  
Austria | +43 5285-63067 | www.hygieneprof.biz

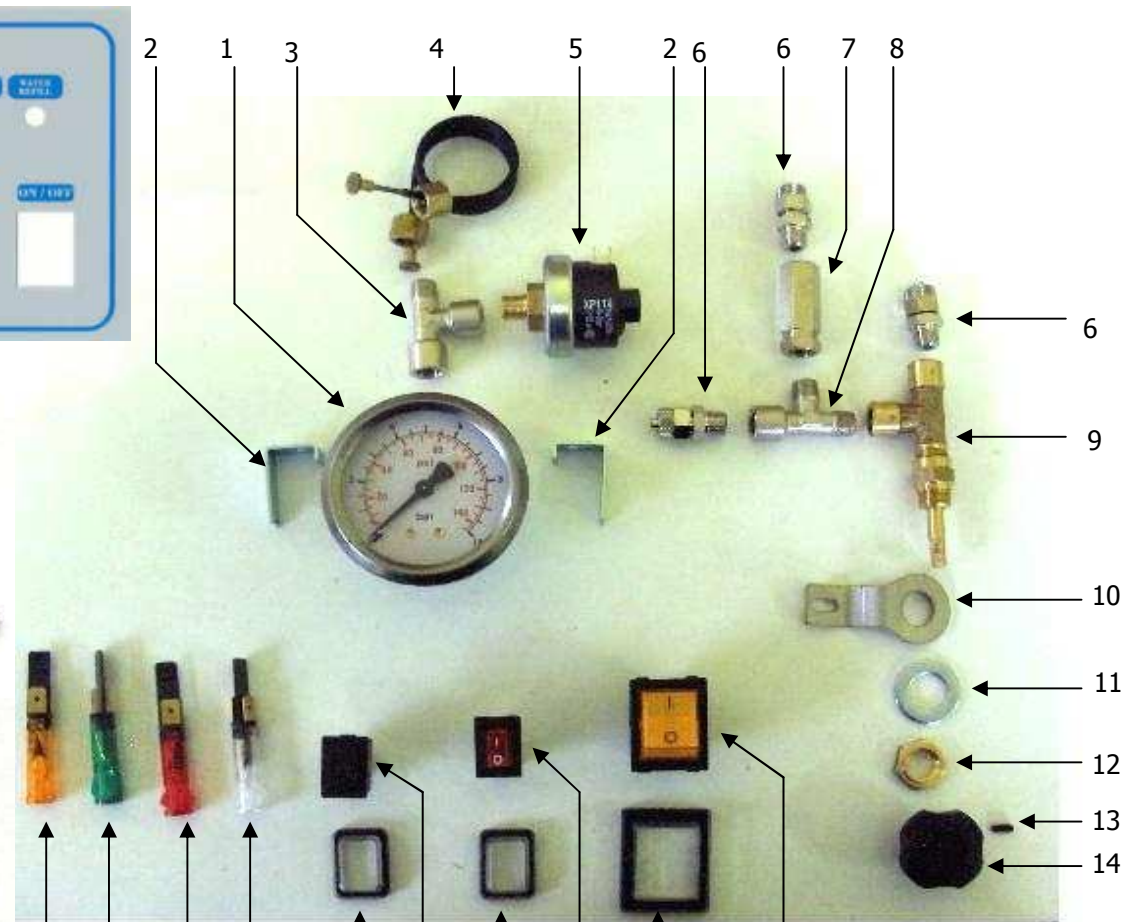
# ELENCO COMPONENTI VAPORNET - 2011 VAPORNET COMPONENTS LIST - 2011.

## 01. FRONTALINO / FRONT PANEL



25

24



23

22

21

20

18

19

18

17

16

15

6

9

10

11

12

13

14

2

1

3

4

5

2

6

6

7

8

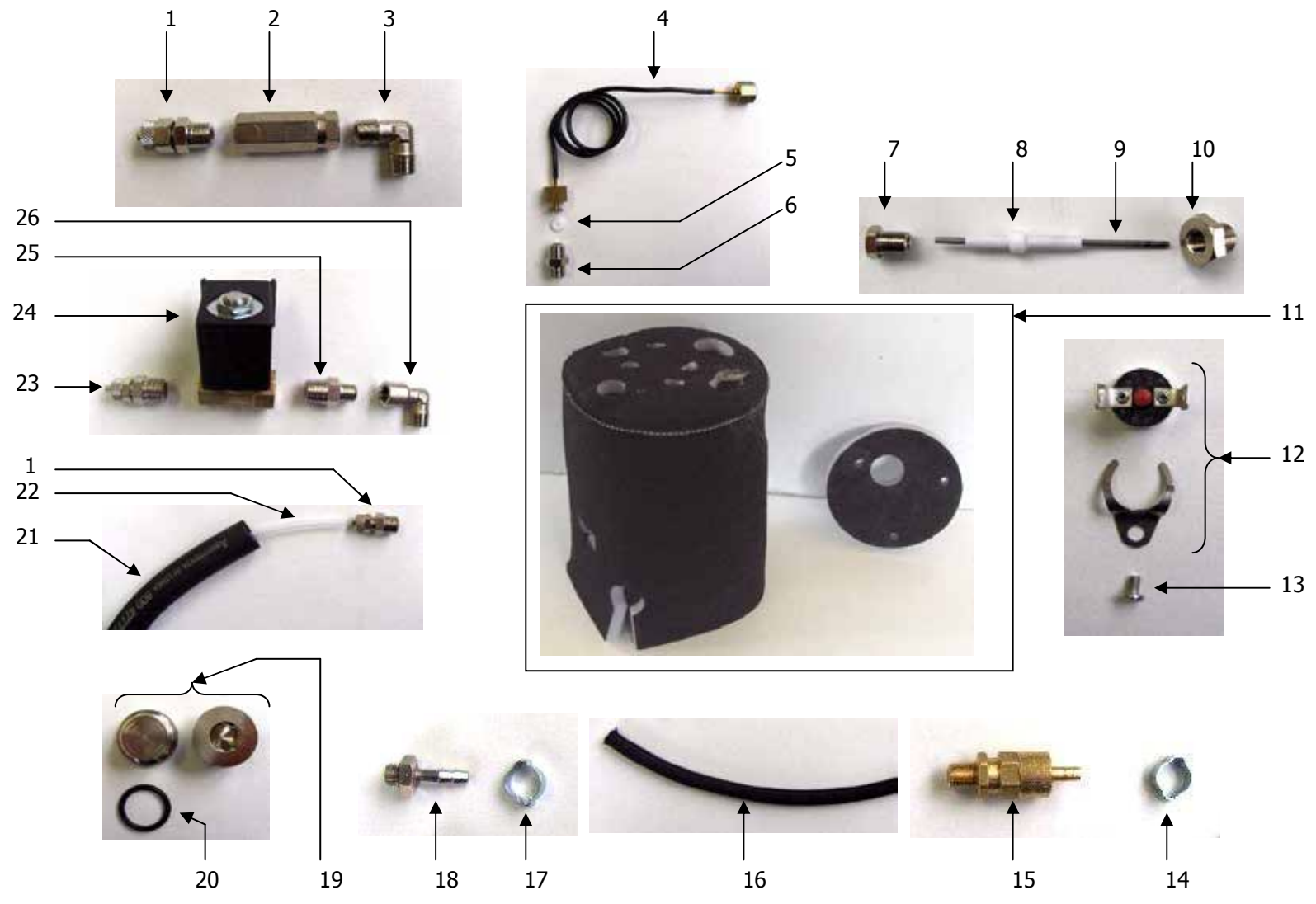
**ELENCO COMPONENTI VAPORNET - 2011 VAPORNET COMPONENTS LIST - 2011.****02. COMPONENTI DELLA CALDAIA / BOILER COMPONENTS**

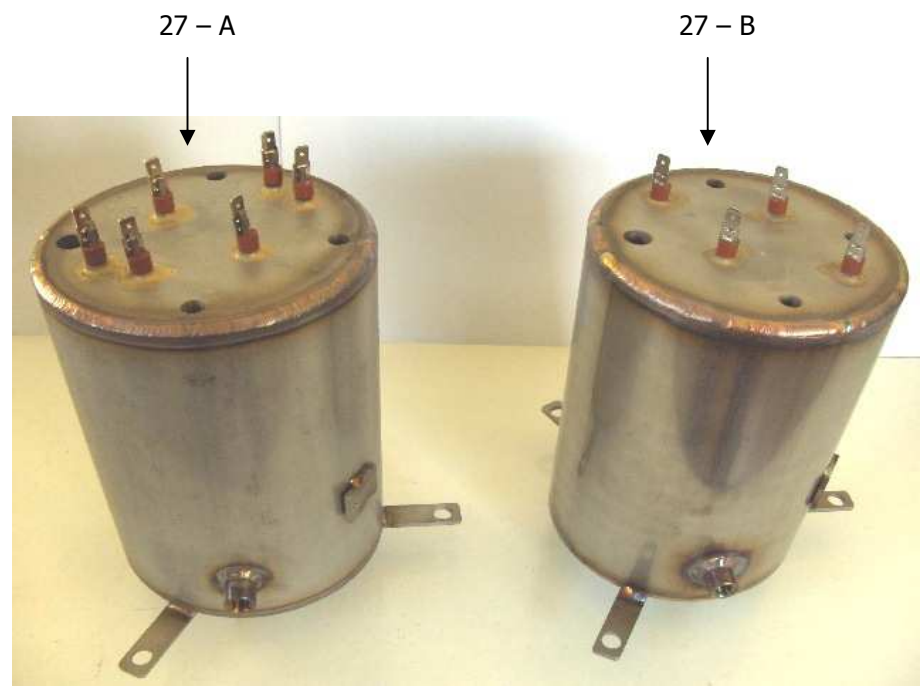
<i>Pos.</i>	<i>CODE</i>	<i>DESCRIPTION ITA</i>	<i>DESCRIPTION ENG</i>
02.1	A000G006C306	RACCORDO DIRITTO MAS. 1/8" - TUBO 6/4	PIPE FITTING, STRAIGHT MALE 1/8" TUBE 6/4
02.2	A036G006C2390	VNR VALVOLA UNIDIREZIONALE 1/8" F	NON-RETURN VALVE 1/8" FF
02.3	A042G006C5478	RACCORDO AD ANGOLO 1/8 M - 1/8 M	ELBOW 1/8 MALE 1/8 MALE
02.4	A000G006C439	CAPILLARE PER MANOMETRO RIVESTITO	COVERED FLEX FOR PRESSURE GAUGE
02.5	A004G006C2208	RONDELLA TEFLON 8x2x2	WASHER TEFLON 8x2x2
02.6	A000G006C192	NIPPLO 1/8 - 1/8	NIPPLE 1/8 -1/8
02.7	A000G006C70	DADO FORATO TESTA ESAG. 12 - FIL. EST. 1/8"	HEXAGONAL NUT (drilled) - EXTERNAL THREAD 1/8"
02.8	A000G006C69	GUARNIZIONE IN TEFLON TENUTA SONDA CALDAIA	GASKET FOR BOILER PROBE (TEFLON)
02.9	A000G006C342	SONDA ACCIAIO 2,5 x 088 mm	BOILER PROBE 2,5 x 088 mm
02.10	A000G006C106	DADO FORATO TESTA ESAG. 19 FIL. INT. 1/8"	HEXAGONAL NUT (drilled) - INTERNAL THREAD 1/8"
(*) 02.11	A000G006C244	COIBENTO IN MELAMMINA+TNT MOD. BIL Monofase	INSULANT, GLASS WOOL, FOR BOILER DL-250-140.165
(*) 02.11	A001G006C666	COIBENTO IN MELAMMINA+TNT MOD. BIL Trifase	INSULANT, GLASS WOOL, FOR BOILER DL-250-140.165
02.12	A000G006C290	TERMOSTATO T=170° CON STAFFA, 16A	THERMOSTAT T= 155°C + HOLDER
02.13	A036G006C5622	VITE 3x5	SCREW 3x5
02.14	A000G006C211	ANELLO PINZABILE 9/11	RING 9/11
02.15	A036G006C2066	VALVOLA DI SICUREZZA 8,5 bar 1/8M <CE> cat. I	SAFETY VALVE, 8 bar 1/8M <CE> cat. I
02.16	A030G006C447	TUBO EPDM 5 x 10 RIV. SINGOLO (metri)	FLEXIBLE HOSE, IN EPDM 5 X 10 (SINGLE COATING)
02.17	A030G006C449	ANELLO PINZABILE 11/13	RING 11/13
02.18	A004G006C394	PORTAGOMMA ATT. 1/8"	HOSE-END FITTING 1/8"
02.19	A000G006C89	TAPPO SCARICO CALDAIA 1/2"	CAP - 1/2" METALWORK
02.20	A004G006C2202	GUARNIZIONE OR IN EPDM 3068 PER TAPPO 1/2"	OR GASKET 3068 EPDM - FOR CAP 1/2"
02.21	A036G006C7514	TUBO ARMACELL ITS d.10 sp.6	PIPE, ARMACELL 6x10
02.22	A001G006C895	TUBO TEFLON 4 x 6	PIPE, TEFLON 4x6
02.23	A000G006C305	RACCORDO DIRITTO MAS. 1/4" - TUBO 6/4	PIPE FITTING, STRAIGHT 1/4" - TUBE 6/4
02.24	A000G006C303	ELETTROVALVOLA VAP. 7000/6 ATT. 1/4 FF S/REG.	ELECTRO-VALVE - STEAM 7000/6 1/4FF
02.25	A000G006C83	NIPPLO 1/8 - 1/4	NIPPLE 1/8 -1/4
02.26	A000G006C158	RACCORDO AD ANGOLO 1/8 M - 1/8 F	ELBOW 1/8 MALE 1/8 FEMALE
(*) 02.27-B	A036G006C7555	CALDAIA MOD. DL250-140.165 R3400Y 230V	BOILER MOD. DL250-140.165 R3400Y 230V
(*) 02.27-A	A036G006C8226	CALDAIA MOD. DL250-140.165 R4500Y 400V TRIF	BOILER MOD. DL250-140.165 R4500Y 400/230V, three-phase
(*) 02.27-A	A030G006C1506	CALDAIA MOD. DL250-140.165 R6000 220V TRIF	BOILER MOD. DL250-140.165 R6000 220V, three-phase
(*) 02.27-A	A036G006C8963	CALDAIA MOD. DL250-140.165 R6000Y 400V TRIF	BOILER MOD. DL250-140.165 R6000Y 400/230V, three-phase

(\*) a seconda dei modelli, vedere dati di targa -

# ELENCO COMPONENTI VAPORNET - 2011 VAPORNET COMPONENTS LIST - 2011.

## 02. COMPONENTI DELLA CALDAIA / BOILER COMPONENTS



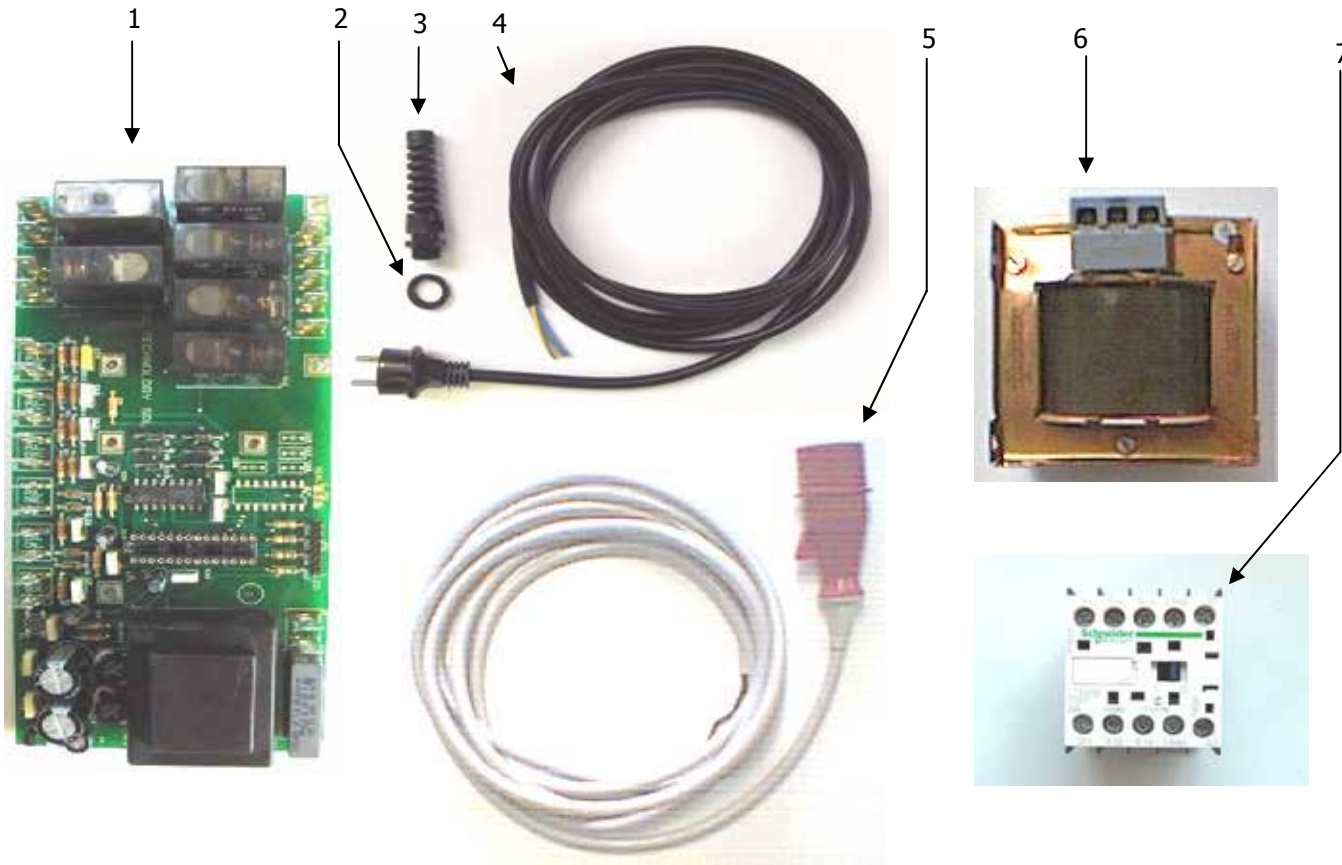


**ELENCO COMPONENTI VAPORNET - 2011 VAPORNET COMPONENTS LIST - 2011.**

03. COMPONENTI ELETTRICI / ELECTRICAL COMPONENTS				
<i>Pos.</i>	<i>CODE</i>	<i>DESCRIPTION ITA</i>	<i>DESCRIPTION ENG</i>	
03.01	A004G006C3782	SCHEDA ELETTRONICA vap09 - 230V	ELECTRONIC CARD vap09-230V	
03.02	A004G006C940	CONTRODADO 3216B PG13,5	LOCK NUT 3216B PG13.5	
03.03	A004G006C938	PRESSACAVO 3246 FLEX LTF 13,5 PG 13,5	CABLE GLAND 3246 FLEX LTF 13.5 PG 13.5	
03.04	A000G006C392	CAVO ALIMEN. 3x2,5 SPINA SCHUKO 4m	INCOMING FEEDER 3x1.5 SHOUKO 4m	
(*) 03.05	A004G006C2195	CAVO ALIMEN. 5x1,5 SPINA 5P 16A CABL. 5m	INCOMING FEEDER 4x2.5 PIN 4P 16A 5m	
(*) 03.05	A001G006C1875	CAVO ALIMEN. 5x2,5 SPINA 5P 16A CABL. 5m	INCOMING FEEDER 5x2.5 PIN 5P 16A 5m	
(*) 03.06	A036G006C168	TRASFORMATORE MON 1000VA 230-400V/115-230V	TRANSFORMER MON. 1000VA 230-400V/115-230V	
(*) 03.06	A004G006C3441	TRASFORMATORE MON 150VA 230-400V/115-230V	TRANSFORMER MON. 150VA 230-400V/115-230V	
(*) 03.06	A004G006C3638	TRASFORMATORE MON 250VA 230-400V/115-230V	TRANSFORMER MON. 250VA 230-400V/115-230V	
(*) 03.06	A004G006C3443	TRASFORMATORE MON 75VA 230-400V/115-230V	TRANSFORMER MON. 75VA 230-400V/115-230V	
03.07	A030G006C126	MINICONTATTORE TRIPOLARE	THREE-POLAR CONTACTOR HR2510NU	

**ELENCO COMPONENTI VAPORNET - 2011 VAPORNET COMPONENTS LIST - 2011.**

**03. COMPONENTI ELTTRICI / ELECTRICAL COMPONENTS**



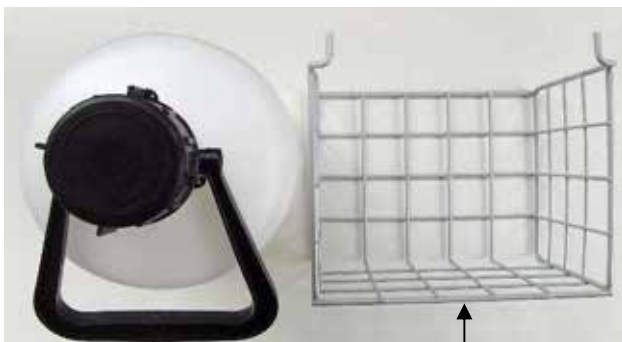
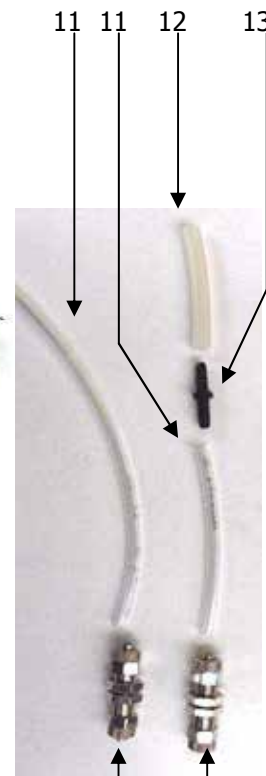
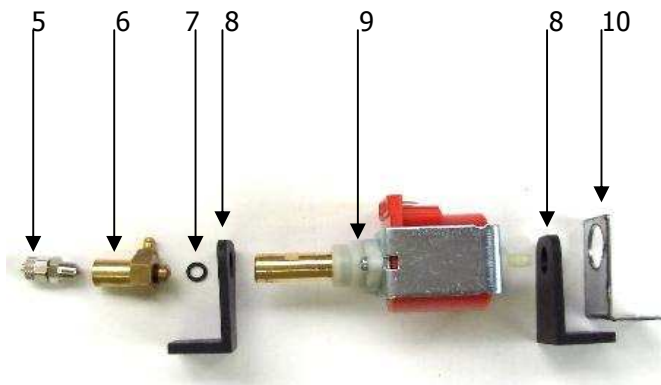
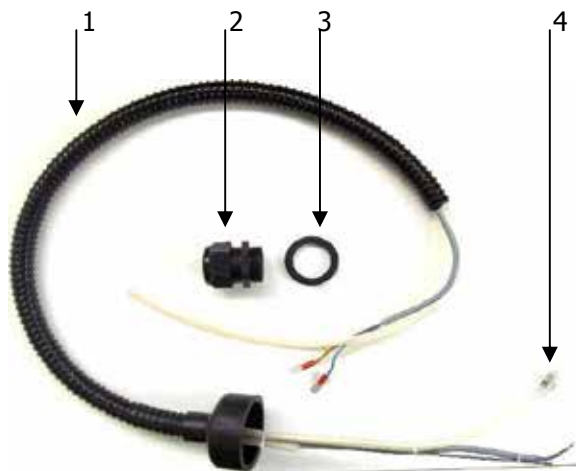
**ELENCO COMPONENTI VAPORNET - 2011 VAPORNET COMPONENTS LIST - 2011.**

04. CIRCUITO DI REINTEGRO ACQUA / HYDRAULIC SYSTEM				
<i>Pos.</i>	<i>CODE</i>	<i>DESCRIPTION ITA</i>	<i>DESCRIPTION ENG</i>	
04.1	A036G006C5663	TAPPO RACCORDATO REV.4	CAP WITH JOINTS REV.4	
04.2	A004G006C934	PRESSACAVO 3225 LTF 29 PG29 NERO	CABLE GLAND 3225 LTF 29 PG29 BLACK	
04.3	A004G006C936	CONTRODADO 3225B PG29	LOCK NUT 3225B PG29	
04.4	A000G006C110	FILTRINO ACQUA ANTIMPURITA'	FILTER, PUMP WATER	
04.5	A000G006C306	RACCORDO DIRITTO MAS. 1/8" - TUBO 6/4	PIPE FITTING, STRAIGHT MALE 1/8" TUBE 6/4	
04.6	A032G006C151	VALVOLA S11 AUTOINNESCO POMPA EX5	VALVE S11	
04.7	A004G006C2366	GUARNIZIONE OR IN NBR 2025 PER VALVOLA S11	OR GASKET 2025 NBR - FOR VALVE S11	
04.8	A000G006C68	SUPPORTO A SQUADRA IN GOMMA POMPA EX5	SUPPORT - RUBBER SQUARE	
04.9	A000G006C41	POMPA EX5 230V 50Hz	PUMP EX5 230V 50Hz	
04.10	A004G006C867	SUPPORTO A SQUADRA IN ACCIAIO POMPA EX5	SUPPORT - S.S. SQUARE	
04.11	A004G006C378	TUBO RAUCLAIR 4 x 6	PIPE, RAUCLAIR 4x6	
04.12	A000G006C43	TUBO SILICONE 4 x 8	PIPE, SILICONE 4x8	
04.13	A004G006C269	NIPPLO IN PLASTICA	NIPPLE	
04.14	A000G006C399	RACCORDO PASSAPARETE DIRITTO 6/4	CONNECTION, STRAIGHT (to/from pump, to/from external tank 6/4)	
04.15	A042G006C3635	BOTTIGLIA DET. RETT. LT. 2 PREASS.	BOTTLE, RECTANGULAR, 2 LITER SIZE, PRE-ASSEMBLED	
04.16	A042G006C3326	SUPPORTO PORTA BOTTIGLIA RETT. 2 LT.	HOLDER - RECTANGULAR GLASS (2 LITRE SIZE)	
04.17	A001G006C659	CESTO 190 x 215 x 180 ZINCATO	BASKET 190X215x180 IRON ZINC.	
04.18	A000G006C269	BOTTIGLIA CON MANIGLIA LT. 5	BOTTLE WITH HANDLE LT. 5	



# ELENCO COMPONENTI VAPORNET - 2011 VAPORNET COMPONENTS LIST - 2011.

## 04. CIRCUITO DI REINTEGRO ACQUA / HYDRAULIC SYSTEM



18

17

16

15

14

14

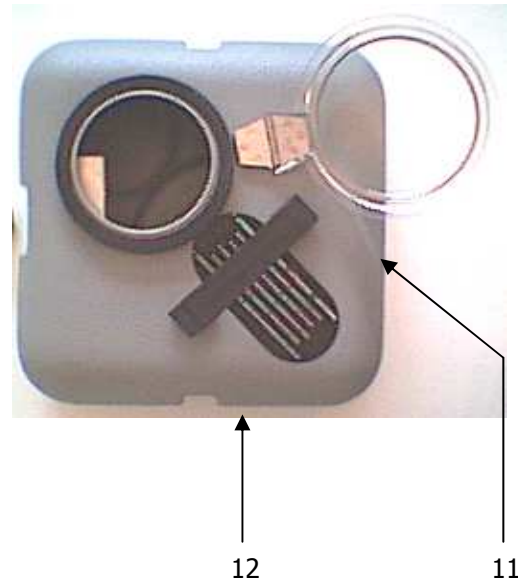
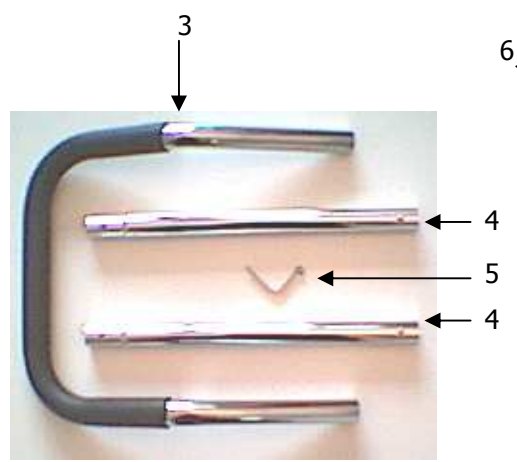
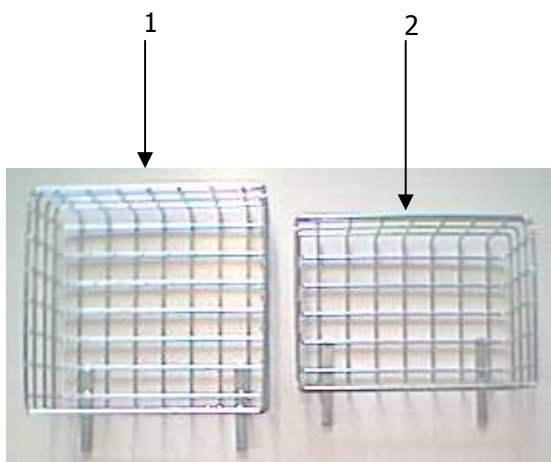
**ELENCO COMPONENTI VAPORNET - 2011 VAPORNET COMPONENTS LIST - 2011.**

05. COMPONENTI DI COMPLEMENTO / COMPLEMENTS COMPONENTS				
<i>Pos.</i>	<i>CODE</i>	<i>DESCRIPTION ITA</i>	<i>DESCRIPTION ENG</i>	
05.1	A001G006C301	CESTO 300 x 290 x 160 ZINCATO	BASKET 300X290X160 IRON ZINC.	
05.2	A001G006C324	CESTO 300 x 220 x 160 ZINCATO	BASKET 300X220X160 IRON ZINC.	
05.3	A004G006C30	TUBO CROMATO A "U" PIEGATO CON ISOLANTE (MANIGLIONE)	TUBE, CHROMIUM-PLATED, "U"-SHAPED, WITH RUBBER	
05.4	A003G006C250	TUBO CROMATO (TUBO PER MANIGLIONE)	TUBE, CHROMIUM-PLATED, FOR KNOB	
05.5	A032G006C248	MOLLETTA BLOCCAGGIO TUBO CROMATO	CLAMP	
05.6	A001G006C1211	ASPIRAP MEC 215 CABLATO	VACUUM MAC 215, CABLED	
05.7	A042G006C2711	TESTATA ASP. MEC 215	HEAD VACCUM MEC 215	
05.8	A032G006C7	SERBATOIO DI RICARICO LM12	TANK LM12 - RECHARGE	
05.9	A042G006C2204	MANICOTTO TUBOFLEX D.38/D.32	COLLAR, TUBOFLEX D.38/D.32	
05.10	A030G006C208	MANICOTTO EVAFL./N NERO/250 D.32	COLLAR, EVAFL/BLACK 250 D.32	
05.10	A042G006C8346	MANICOTTO GIREVOLE D.36 CON GOLA	SWIVELLING COLLAR D.36	
05.11	A032G006C5	SERBATOIO RECUPERO LM12	TANK LM12 - RECOVERY	
05.12	A004G006C2111	ASPIRATORE LM12 GRIGIO CABLATO	VACUUM LM12, GREY, CABLED	



**ELENCO COMPONENTI VAPORNET - 2011 VAPORNET COMPONENTS LIST - 2011.**

**05. COMPONENTI DI COMPLEMENTO / COMPLEMENTS COMPONENTS**



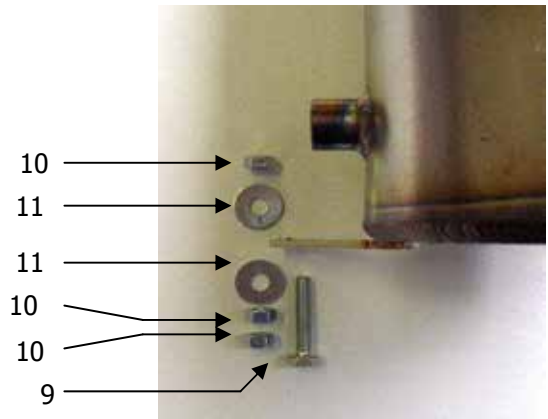
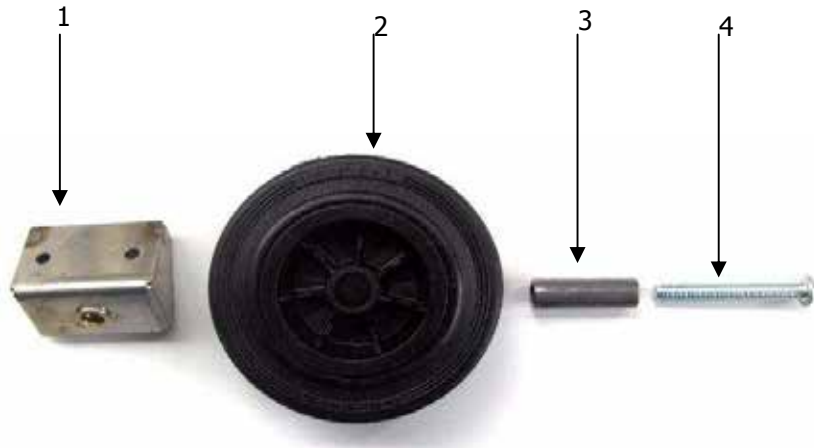
**ELENCO COMPONENTI VAPORNET - 2011 VAPORNET COMPONENTS LIST - 2011.**

06. COMPONENTI DELLA SCOCCA / BODY				
<i>Pos.</i>	<i>CODE</i>	<i>DESCRIPTION ITA</i>	<i>DESCRIPTION ENG</i>	
06.1	A001G006C611	SUPPORTO RUOTE SCOCCA BILLY	HOLDER - CASE WHEELS	
06.2	A004G006C3285	RUOTA GOMMA NERA D. 125	WHEEL, BLACK RUBBER D.125	
06.3	A030G006C1128	BUSSOLA 10x15x47 SUPPORTO RUOTA D.125	BUSH 10x15x47, 125 dia. WHEEL SUPPORT	
06.4	A042G006C7709	VITE 10 x 70	SCREW, 10x70	
06.5	A000G006C87	DADO ESAGONALE M10 ZINC.	HEXAGONAL NUT M10 zinc	
06.6	A000G006C112	RONDELLA D.10 x 20	WASHER D 10 X 20	
(*) 06.7	A004G006C942	RUOTA ANT. B38 GIREV. GOMMA NERA CON BLOCCO	SWIVELLING WHEEL IN PLASTIC (BLACK) W. BLOCKING - B38	
(*) 06.7	A042G006C7532	RUOTA ANT. B46 GIREV. GOMMA NERA CON BLOCCO	SWIVELLING WHEEL IN PLASTIC (BLACK) W. BLOCKING - B46	
06.8	A030G006C322	SUPPORTO MANICO	HOLDER - HANDLE	
06.9	A032G006C245	DISCO PASSA CAVO	CABLE CLOCK DISC	
06.10	A004G006C2466	VITE 4 x 8 TC BRUG. BOMB. INOX	SCREW 4x8, S.S. ROUNDED CYLONDRIC HEAD	
06.11	A004G006C743	VITE 6 x 30 TESAG. ZINC.	SCREW, HEXAGONAL HEAD 6X30, GALVANIZED	
06.12	A000G006C326	DADO ESAGONALE M 6	HEXAGONAL NUT M6	
06.13	A000G006C333	RONDELLA D. 6 x 18	WASHER D 6 X18	
06.14	A004G006C717	VITE 6 x 10 TESAG.	SCREW, HEXAGONAL HEAD 6X10	

(\*) a seconda del modello

# ELENCO COMPONENTI VAPORNET - 2011 VAPORNET COMPONENTS LIST - 2011.

## 06. COMPONENTI DELLA SCOCCA / BODY



**ELENCO COMPONENTI VAPORNET - 2011 VAPORNET COMPONENTS LIST - 2011.**

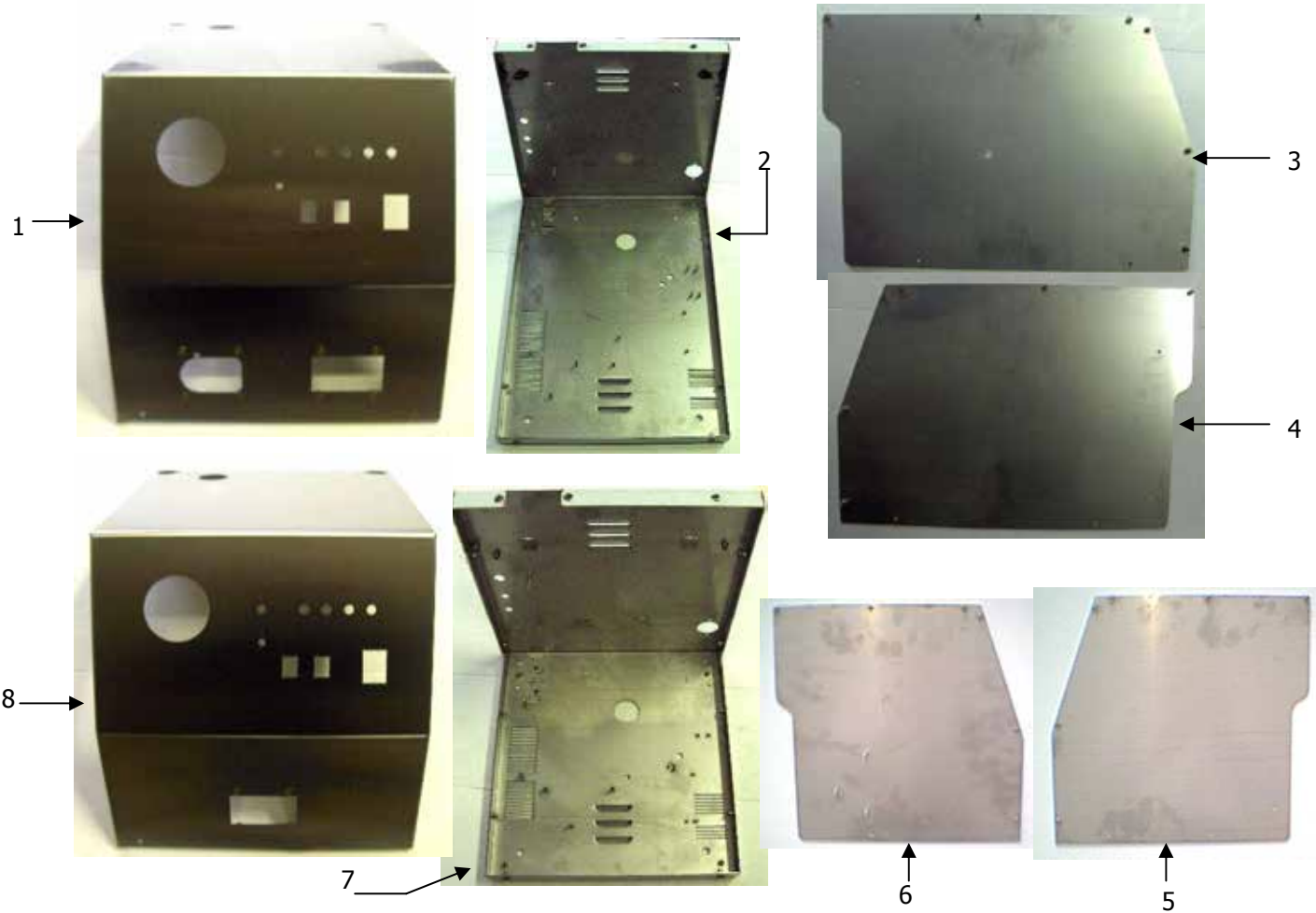
07. SCOCCA / BODY				
<i>Pos.</i>	<i>CODE</i>	<i>DESCRIPTION ITA</i>	<i>DESCRIPTION ENG</i>	
08.1	A000G006C61	SCOCCA COPERTURA BILLY 46	BODY CAP, BILLY 46	
08.2	A000G006C131	SCOCCA BASAMENTO BILLY/CYC 46	BODY BASE, BILLY 46	
08.3	A000G006C81	SCOCCA FIANCO DESTRO BILLY 46	SIDE DX, BILLY 46	
08.4	A001G006C1357	SCOCCA FIANCO SINISTRO BILLY 46	SIDE SX, BILLY 46	
08.5	A001G006C605	SCOCCA COPERTURA BILLY 38	BODY CAP, BILLY 38	
08.6	A001G006C603	SCOCCA BASAMENTO BILLY 38	BODY BASE, BILLY 38	
08.7	A001G006C609	SCOCCA FIANCO SINISTRO BILLY 38	SIDE SX, BILLY 38	
08.8	A001G006C607	SCOCCA FIANCO DESTRO BILLY 38	SIDE DX, BILLY 38	



Schrama Handels GmbH | Schwendberg 465 | A-6283 Hippach |  
Austria | +43 5285-63067 | [www.hygienprofi.biz](http://www.hygienprofi.biz)

**ELENCO COMPONENTI VAPORNET - 2011 VAPORNET COMPONENTS LIST - 2011.**

**07. SCOCCA / BODY**



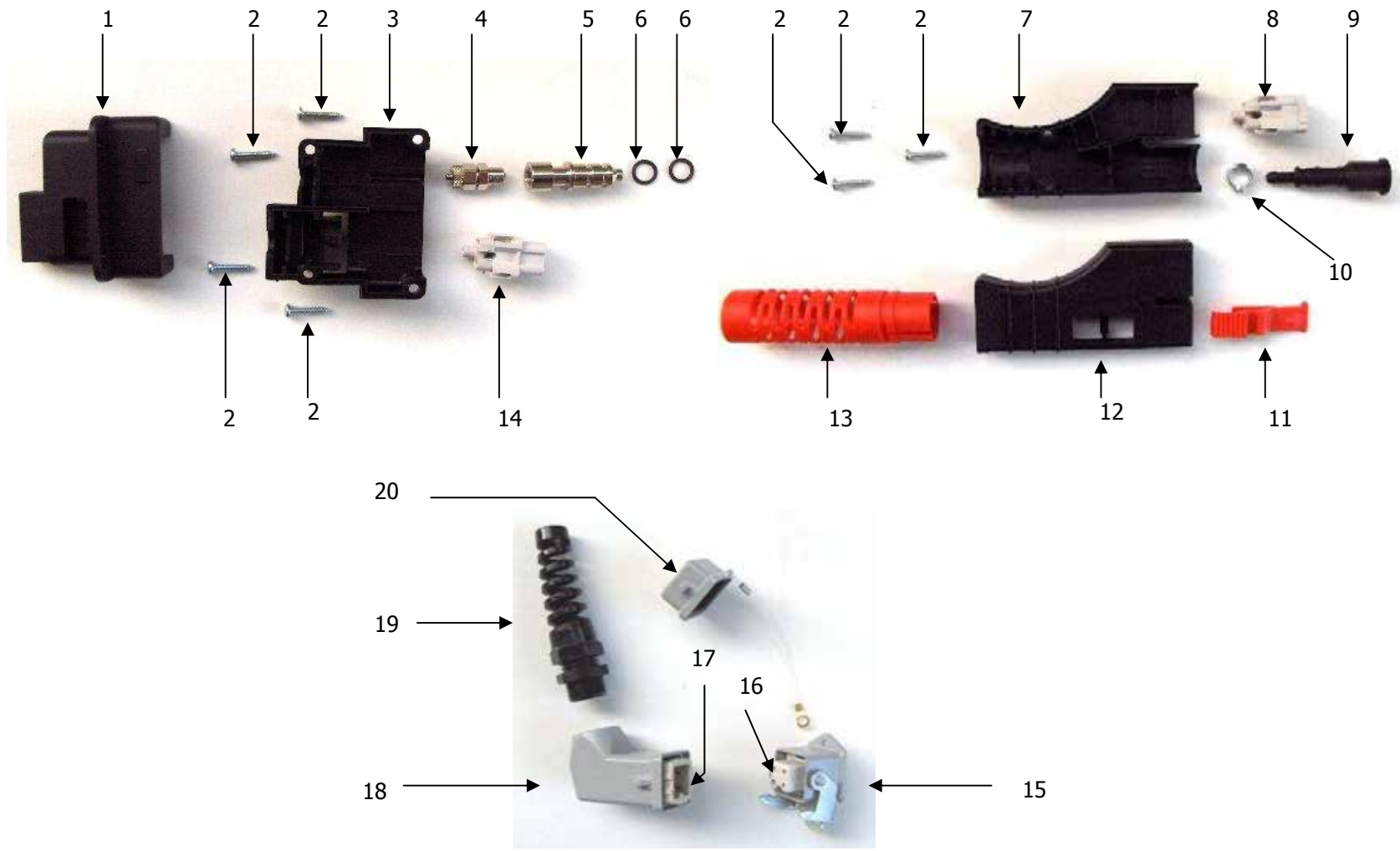
**ELENCO COMPONENTI VAPORNET - 2011 VAPORNET COMPONENTS LIST - 2011.**

08. COMPONENTI ACCESSORI VAPORE / STEAM ACCESSORIES COMPONENTS				
<i>Pos.</i>	<i>CODE</i>	<i>DESCRIPTION ITA</i>	<i>DESCRIPTION ENG</i>	
08.1	A003G006C130	GUSCIO PRESA ACCESSORI VAP. SUPERIORE	SOCKET, UPPER SHELL, TO ACCESSORIES	
08.2	A000G006C115	VITE AUTOF. 4 x 20	SCREW, THREAD-FORMING SELF TAPPING 4x20	
08.3	A003G006C132	GUSCIO PRESA ACCESSORI VAP. INFERIORE	SOCKET, LOWER SHELL, TO ACCESSORIES	
08.4	A000G006C306	RACCORDO DIRITTO MAS. 1/8" - TUBO 6/4	PIPE FITTING, STRAIGHT MALE 1/8" TUBE 6/4	
08.5	A004G006C888	INNESTO VAP. MASCHIO OTTONE NICHELATO 15 x 45	STEAM COUPLING, MALE, NICKEL BRASS, 15X45	
08.6	A000G006C125	GUARNIZIONE OR IN VITON 2037 PER ACCESSORI VAPORE	OR GASKET 2037 VITON - FOR STEAM ACCESSORIES	
08.7	A001G006C154	GUSCIO SPINA VAP. INF.	PLUG, LOWER SHELL, TO STEAM SUPPLY	
08.8	A003G006C106	CONNETTORE ELETTRICO CKM04	CONNECTOR CKM04	
08.9	A003G006C107	INNESTO VAP. FEM. CONICO NYLON SPINA MASCHIO ACC.	STEAM COUPLING, FEMALE, NYLON, FOR ACC. PLUG	
08.10	A000G006C211	ANELLO PINZABILE 9/11	RING 9/11	
08.11	A003G006C119	LINGUETTA ROSSA BLOCCAGGIO SPINA ACCESSORI	ACCESSORIES PLUG CLAMPING TONGUE (RED)	
08.12	A001G006C156	GUSCIO SPINA VAP. SUP.	PLUG, UPPER SHELL, TO STEAM SUPPLY	
08.13	A003G006C113	SALVATUBO ROSSO PER ACCESSORI	TUBE PROTECTION, RED, FOR ACCESSORIES	
08.14	A003G006C138	CONNETTORE ELETTRICO CKF04	CONNECTOR CKF04	
08.15	A004G006C3344	PRESA A PANNELO CKA-03-I	SOCKET FOR POWER SUPPLY TO VACUUM	
08.16	A003G006C148	CONNETTORE ELETTRICO CKF03	CONNECTOR CKF03	
08.17	A003G006C147	CONNETTORE ELETTRICO CKM03	CONNECTOR CKM03	
08.18	A036G006C539	PRESA MOBILE CKA-03-VAS	PLUG, FOR POWER SUPPLY TO VACUUM	
08.19	A000G006C169	PRESSACAVALO 3243 FLEX LTF11 PG11	CABLE GLAND 3243 FLEX LTF11 PG11	
08.20	A003G006C71	COPERCHIO CKA-03-C.	COVER CKA-03-C.	



**ELENCO COMPONENTI VAPORNET - 2011 VAPORNET COMPONENTS LIST - 2011.**

**08. COMPONENTI ACCESSORI VAPORE / STEAM ACCESSORIES COMPONENTS**

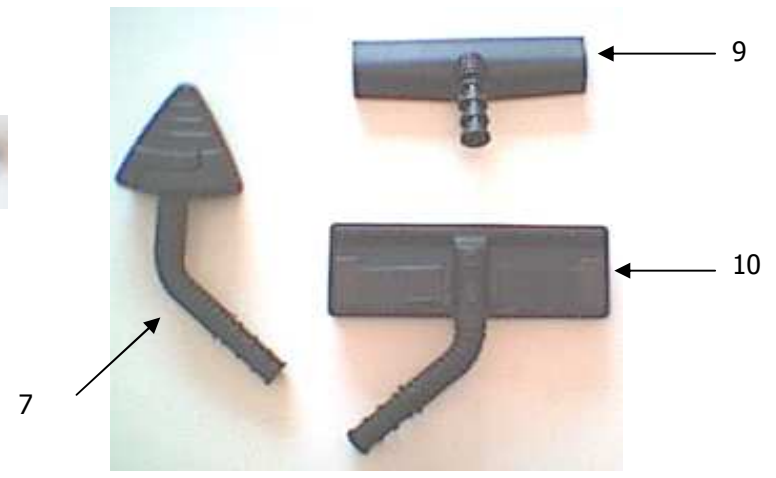
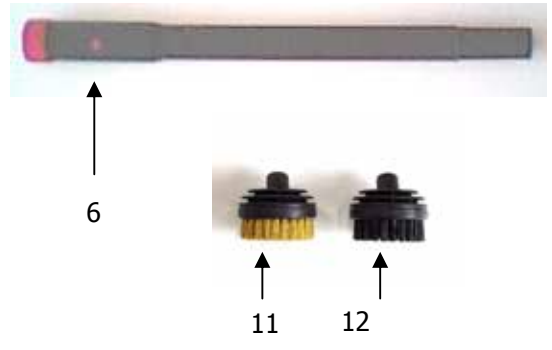
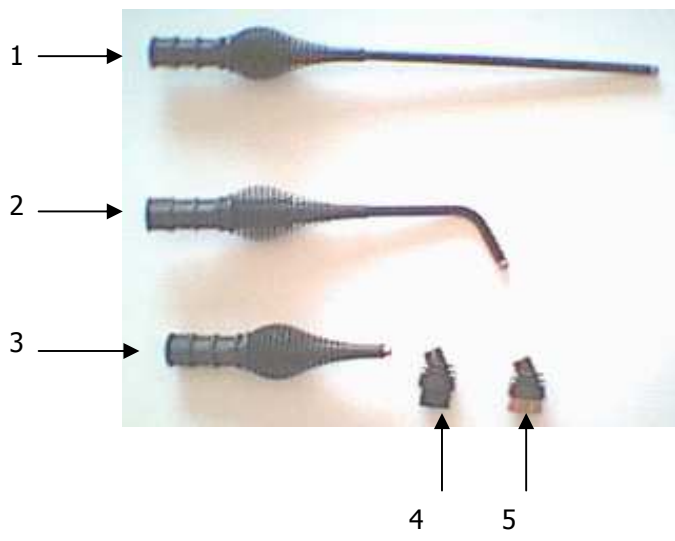


**ELENCO COMPONENTI VAPORNET - 2011 VAPORNET COMPONENTS LIST - 2011.**

9. ACCESSORI VAPORE / STEAM ACCESSORIES				
<i>Pos.</i>	<i>CODE</i>	<i>DESCRIPTION ITA</i>	<i>DESCRIPTION ENG</i>	
7.01	A004G006C500	LANCIA VAPORE CON PROLUNGA DIRITTA	NOZZLE WITH STRAIGHT EXTENSION	
7.02	A004G006C502	LANCIA VAPORE CON PROLUNGA CURVA	NOZZLE WITH CURVED EXTENSION	
7.03	A004G006C498	LANCIA VAPORE CON INSERTO	NOZZLE	
7.04	A004G006C504	SPAZZOLINO A SCATTO PICC. - SET. POL. PBT NERO	BRUSH IN BLACK POL. BTP - SMALL ROUND	
7.05	A004G006C506	SPAZZOLINO A SCATTO PICCOLO - SET. OTTONE	BRUSH BRASS - SMALL ROUND	
7.06	A004G006C490	PROLUNGA VAPORE CON GHIERA ROSSA	EXTENSION PIPE, STEAM, WITH RED RING	
7.07	A004G006C494	SPAZZOLA TRIANGOLARE NERA (NUOVO MODELLO)	BRUSH, TRIANGULAR BLACK	
7.08	A030G006C1479	FLESS. VAP. IMP. 04mt MONOPULS. TUBO 120°	FLEX HOSE - STEAM, HANDGRIP, 04mt ONE-BUTTON	
7.09	A004G006C496	TERGIVETRO - VAPORIZZATORE	WINDOW WIPER	
7.10	A004G006C492	SPAZZOLA RETTANGOLARE LUX 180 NERA	BRUSH, FOR FLOOR, RECTANGULAR "LUX 180", BLACK	
7.11	A003G006C927	SPAZZOLINO A SCATTO MEDIO - SET. OTTONE	BRUSH BRASS - MEDIUM ROUND	
7.12	A004G006C272	SPAZZOLINO A SCATTO MEDIO - SET. POL. PBT NERO	BRUSH IN BLACK POL. BTP - MEDIUM ROUND	

**ELENCO COMPONENTI VAPORNET - 2011 VAPORNET COMPONENTS LIST - 2011.**

**9. ACCESSORI VAPORE / STEAM ACCESSORIES**



**ELENCO COMPONENTI VAPORNET - 2011 VAPORNET COMPONENTS LIST - 2011.****10. ACCESSORI ASP. VAPORE / STEAM INTAKE ACCESSORIES**

<i>Pos.</i>	<i>CODE</i>	<i>DESCRIPTION ITA</i>	<i>DESCRIPTION ENG</i>
09.1	A004G006C2031	TELAIO SETOLATO mm. 150	FRAME WITH BRISTLES mm 150
09.2	A004G006C2033	TELAIO TERGIVETRO mm. 150	FRAME+SQUEEGEE mm 150
09.3	A004G006C2029	BOCCHETTINA ASPIRA VAPORE mm. 150	NOZZLE, STEAM INTAKE mm 150 SMALL SIZE
09.4	A004G006C2035	TERGIVETRO ASPIRA VAPORE mm. 250	GLASS-WASHER (STEAM-SUCKING) mm 250
09.5	A004G006C2039	BOCCHETTINA mm. 80	NOZZLE mm. 80
(*) 09.6	A001G006C1812	SPAZZOLINO TONDO D.30 OTTONE PER LANCIA ASP-VAP	BRUSH D30 BRASS, SMALL SIZE
(*) 09.6	A004G006C2041	SPAZZOLINO TONDO D.30 SETOL. PER LANCIA ASP-VAP	BRUSH D30 POLYESTER , SMALL SIZE
09.7	A004G006C2037	LANCIA ASP-VAP PORTACC. UNIVERSALE	NOZZLE, STEAM/INTAKE, UNIVERSAL TYPE
09.8	A030G006C404	TELAIO BOCCHETTA GRANDE D35	FRAME - NOZZLE, STEAM INTAKE D.35
09.9	A000G006C409	BOCCHETTA GRANDE VAPORE D.35 PER ASP. VAPORE	NOZZLE, STEAM INTAKE D.35
(*) 09.10	A042G006C2591	FLESS. ASP-VAP IMP. 05mt TRIPULS. CABL. LG.	FLEX HOSE ST.-SUC., WITH HANDGRIP, 05mt 3-BUTTON LG.
(*) 09.10	A042G006C8349	FLESS. ASP-VAP IMP. 05mt TRIPULS. CABL. WG	FLEX HOSE - ST.-SUC., WITH HANDGRIP, 05mt 3-BUT WG.
09.11	A000G006C408	PROLUNGA INTEGR. VAP. D.35 PER ASP. VAPORE	EXTENSION PIPE, STEAM -SUCTION
(*) 09.12	A001G006C1805	TELAIO D.12 IN GOMMA PER LIQUIDI	FRAME (RUBBER) D-12 FOR FLUIDS mm 400
(*) 09.13	A001G006C1807	TELAIO D.12 PATTINI PER TAPPETI	FRAME WITH PLASTIC INSERT D-12 FOR CARPETS mm 400
(*) 09.14	A032G006C247	TELAIO D.12 SETOLATO PER PAVIMENTI	FRAME WITH BRISTLES D-12 FOR FLOOR mm 400
(*) 09.12	A004G006C2025	TELAIO D.13 IN GOMMA PER LIQUIDI	FRAME WITH PLASTIC INSERT D-13 FOR CARPETS mm 300
(*) 09.13	A004G006C2027	TELAIO D.13 PATTINI PER TAPPETI	FRAME WITH PLASTIC INSERT D-13 FOR CARPETS mm 300
(*) 09.14	A004G006C2023	TELAIO D.13 SETOLATO PER PAVIMENTI	FRAME WITH BRISTLES D-13 FOR FLOOR mm 300
(*) 09.15	A001G006C1804	BOCCHETTA D.12 ASPIRA VAPORE L=400 mm	NOZZLE, STEAM INTAKE mm 400
(*) 09.15	A004G006C2021	BOCCHETTA D.13 ASPIRA VAPORE L=300 mm	NOZZLE, STEAM INTAKE mm 300



Schrama Handels GmbH | Schwendberg 465 | A-6283 Hippach |  
Austria | +43 5285-63067 | www.hygienprofi.biz

**ELENCO COMPONENTI VAPORNET - 2011 VAPORNET COMPONENTS LIST - 2011.**

**10. ACCESSORI ASP. VAPORE / STEAM INTAKE ACCESSORIES**

